

Check valve 35 and 37

- Stainless or acid-proof steel
- Female thread 1/4" - 4"
- Spring loaded



Description

Check valve.

Construction

Check valve in pressed stainless steel. Seal in Viton.

Model 35

Stainless steel, connection female thread 1/4" - 4".

Model 37

Acid-proof steel, connection female thread 3/8" - 2 1/2".

Marking

Manufacturer and year.

Maintenance

Check valves are normally maintenance-free but should be inspected periodically.

Technical data

Model 35

Body	Stainless steel AISI 304
Plate	Stainless steel AISI 304
Spring	Stainless steel AISI 304

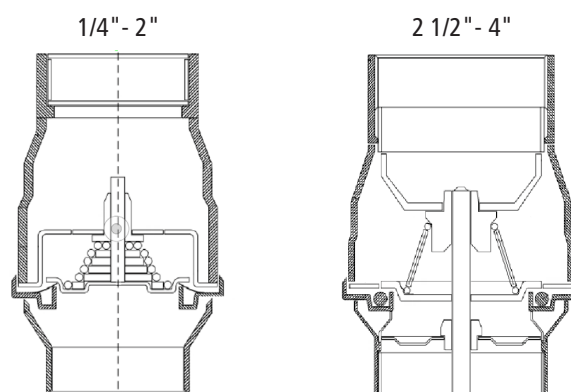
Model 37

Body	Stainless acid-proof steel AISI 316
Plate	Stainless acid-proof steel AISI 316
Spring	Stainless acid-proof steel AISI 316

Both models

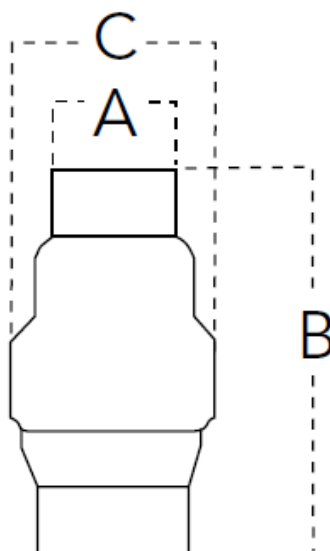
Guide bush	PTFE
Seal ring	Viton

Nominal working pressure: 16 bar
 Maximum working pressure: see chart
 Minimum opening pressure: 0,025 bar
 Maximum opening pressure: 0,035 bar
 Maximum working temperature: +150°C
 Minimum working temperature: -20°C



Subject to technical changes and corrections without notice

Check valve 35 and 37



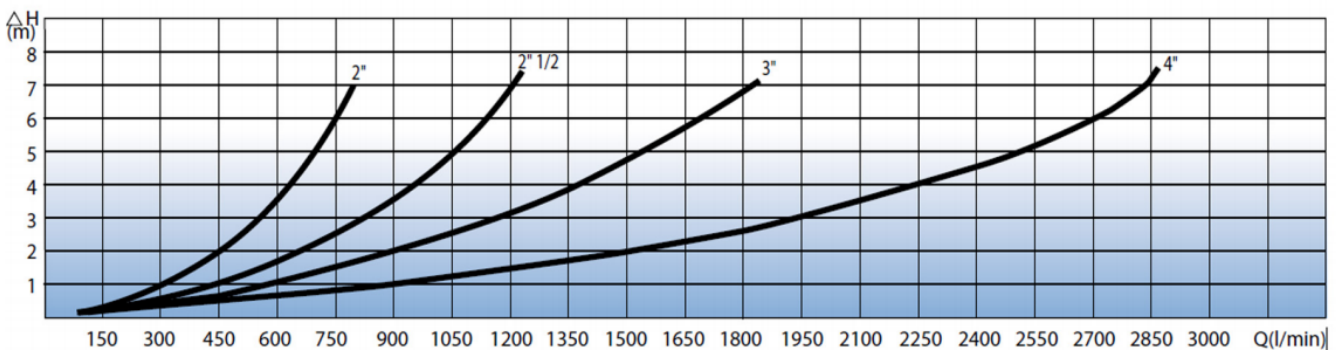
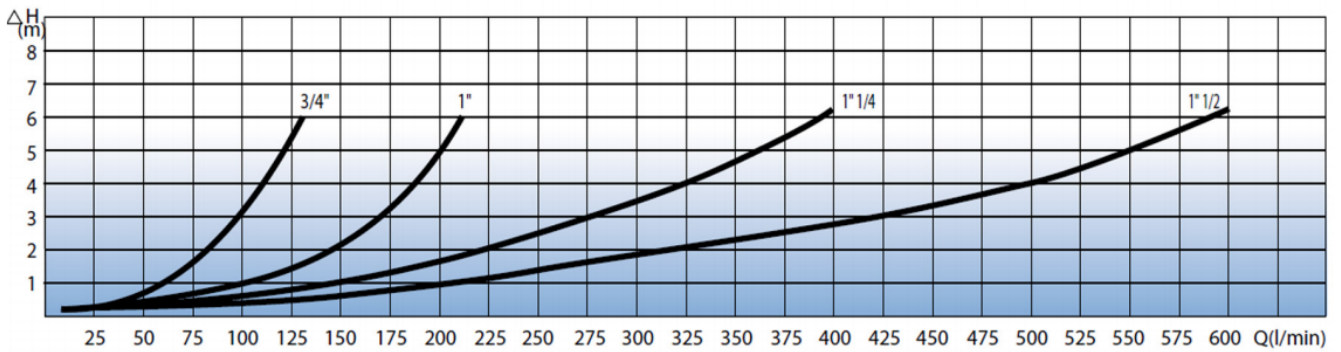
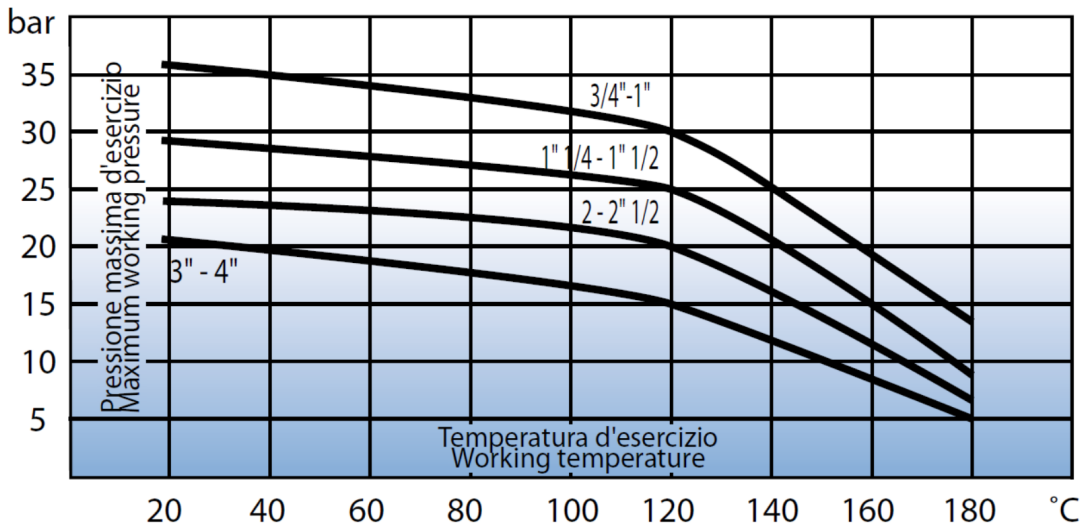
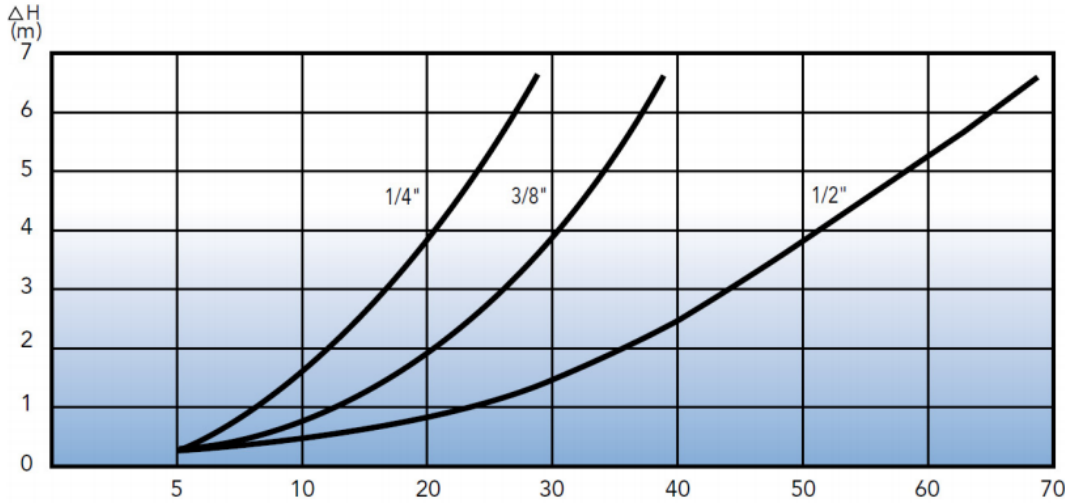
Item number	Description	Connection thread	Dimension			Max pressure (bar)	Weight (kg per piece)
			A	B	C		
0535008000	Check valve 35-8, 1/4" F	1/4" F	25	55	32	30	0,09
0535010000	Check valve 35-10, 3/8" F	3/8" F	25	55	32	30	0,09
0535015000	Check valve 35-15, 1/2" F	1/2" F	25	55	32	30	0,09
0535020000	Check valve 35-20, 3/4" F	3/4" F	29	70	44	35	0,13
0535025000	Check valve 35-25, 1" F	1" F	36	84	53	35	0,19
0535032000	Check valve 35-32, 1 1/4" F	1 1/4" F	45	99	62	29	0,28
0535040000	Check valve 35-40, 1 1/2" F	1 1/2" F	51	119	78	29	0,39
0535050000	Check valve 35-50, 2" F	2" F	64	123	89	24	0,70
0535065000	Check valve 35-65, 2 1/2" F	2 1/2" F	80	147	113	24	1,43
0535080000	Check valve 35-80, 3" F	3" F	93	166	132	20	2,09
0535100000	Check valve 35-100, 4" F	4" F	120	193	167	20	3,42
0537010000	Check valve 37-10, 3/8" F	3/8" F	25	55	32	30	0,09
0537015000	Check valve 37-15, 1/2" F	1/2" F	25	55	32	30	0,10
0537020000	Check valve 37-20, 3/4" F	3/4" F	29	70	44	35	0,13
0537025000	Check valve 37-25, 1" F	1" F	36	84	53	35	0,19
0537032000	Check valve 37-32, 1 1/4" F	1 1/4" F	45	99	62	29	0,28
0537040000	Check valve 37-40, 1 1/2" F	1 1/2" F	51	119	78	29	0,39
0537050000	Check valve 37-50, 2" F	2" F	64	123	89	24	0,70
0537065000	Check valve 37-65, 2 1/2" F	2 1/2" F	80	147	113	24	1,43

All dimensions in millimetres

Subject to technical changes and corrections without notice

Check valve 35 and 37

Pressure drop chart



Subject to technical changes and corrections without notice